

# PORTOLA MIDDLE SCHOOL PROJECT STATUS PRESENTATION

May 31, 2014



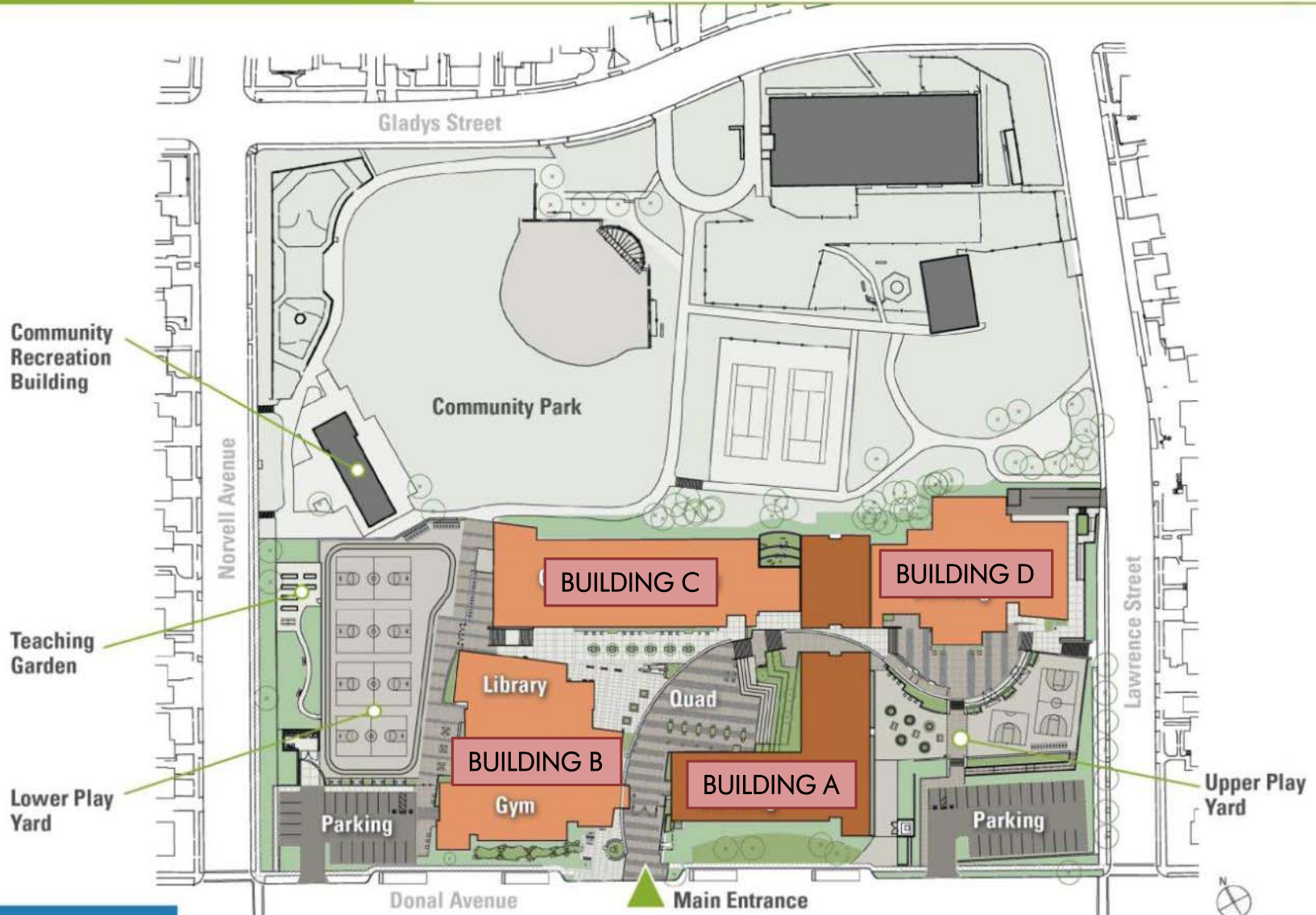
School Designer  
Design Awards  
**Bronze Award:**  
Library/Media Center



**PORTOLA MIDDLE / FAIRMONT ELEMENTARY SCHOOLS**  
WEST CONTRA COSTA UNIFIED SCHOOL DISTRICT  
PROJECT STATUS UPDATE  
MAY 31, 2014

HIBSER YAMAUCHI  
ARCHITECTS, INC. **HY**

# Integration with THE COMMUNITY



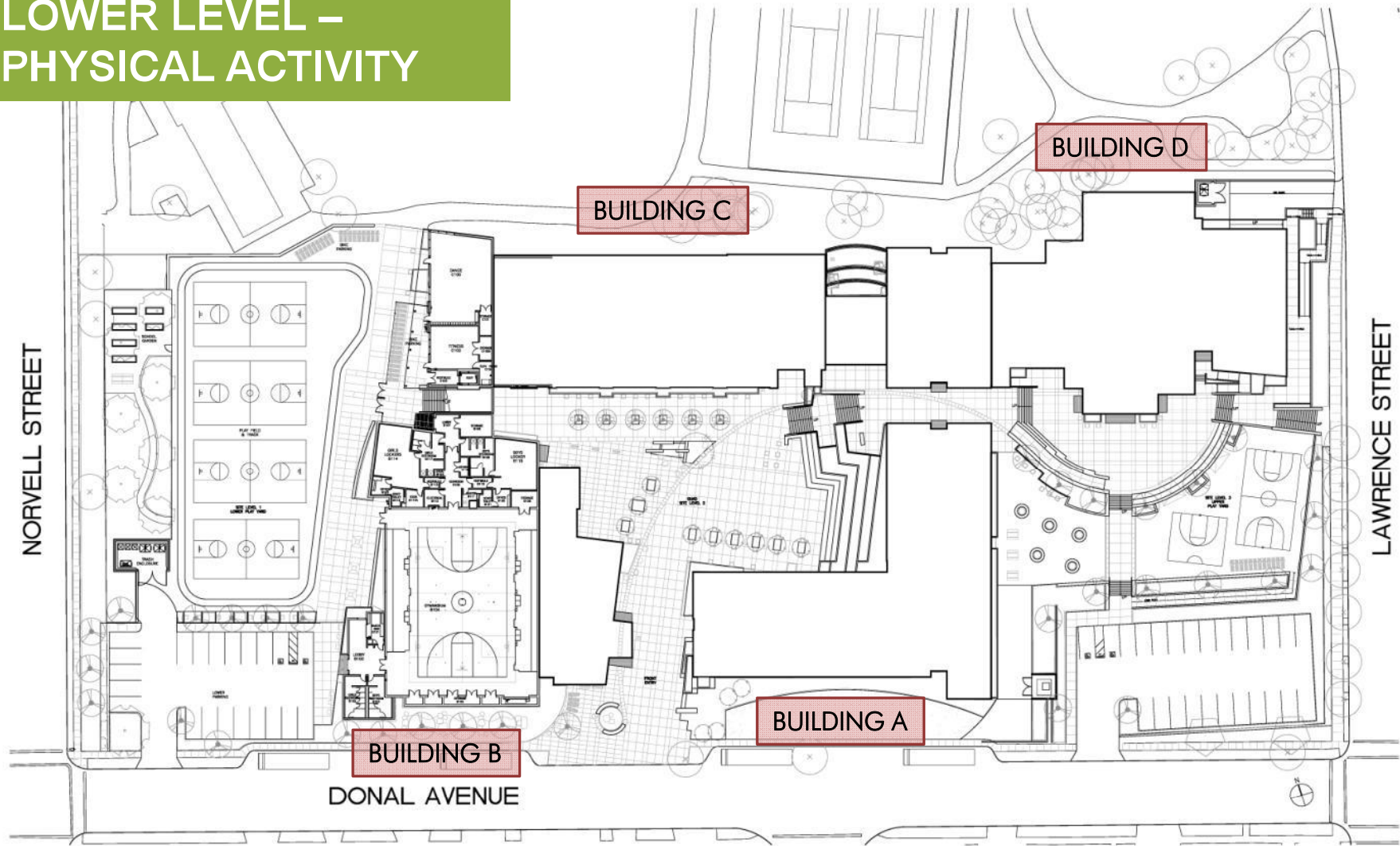
**PORTOLA MIDDLE / FAIRMONT ELEMENTARY SCHOOLS**  
WEST CONTRA COSTA UNIFIED SCHOOL DISTRICT  
PROJECT STATUS UPDATE  
MAY 31, 2014

HIBSER YAMAUCHI  
ARCHITECTS, INC.





# LOWER LEVEL – PHYSICAL ACTIVITY



COMPOSITE SITE/FLOOR PLAN - SITE LEVEL 1

SCALE: 1" = 20'-0"

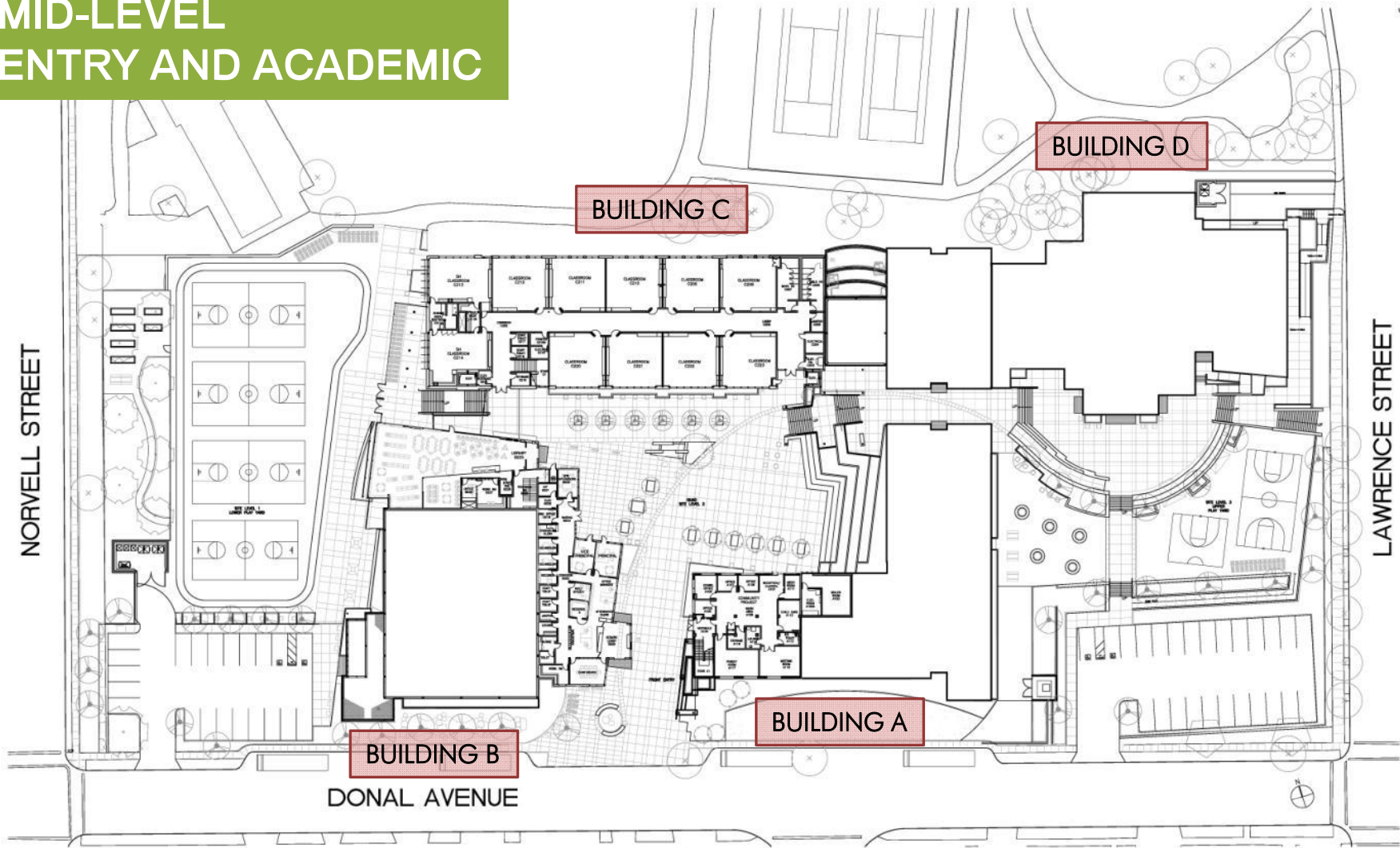


**PORTOLA MIDDLE / FAIRMONT ELEMENTARY SCHOOLS**  
WEST CONTRA COSTA UNIFIED SCHOOL DISTRICT  
PROJECT STATUS UPDATE  
MAY 31, 2014

HIBSER YAMAUCHI  
ARCHITECTS, INC.



# MID-LEVEL ENTRY AND ACADEMIC



COMPOSITE SITE/FLOOR PLAN - SITE LEVEL 2

SCALE: 1" = 20'-0"

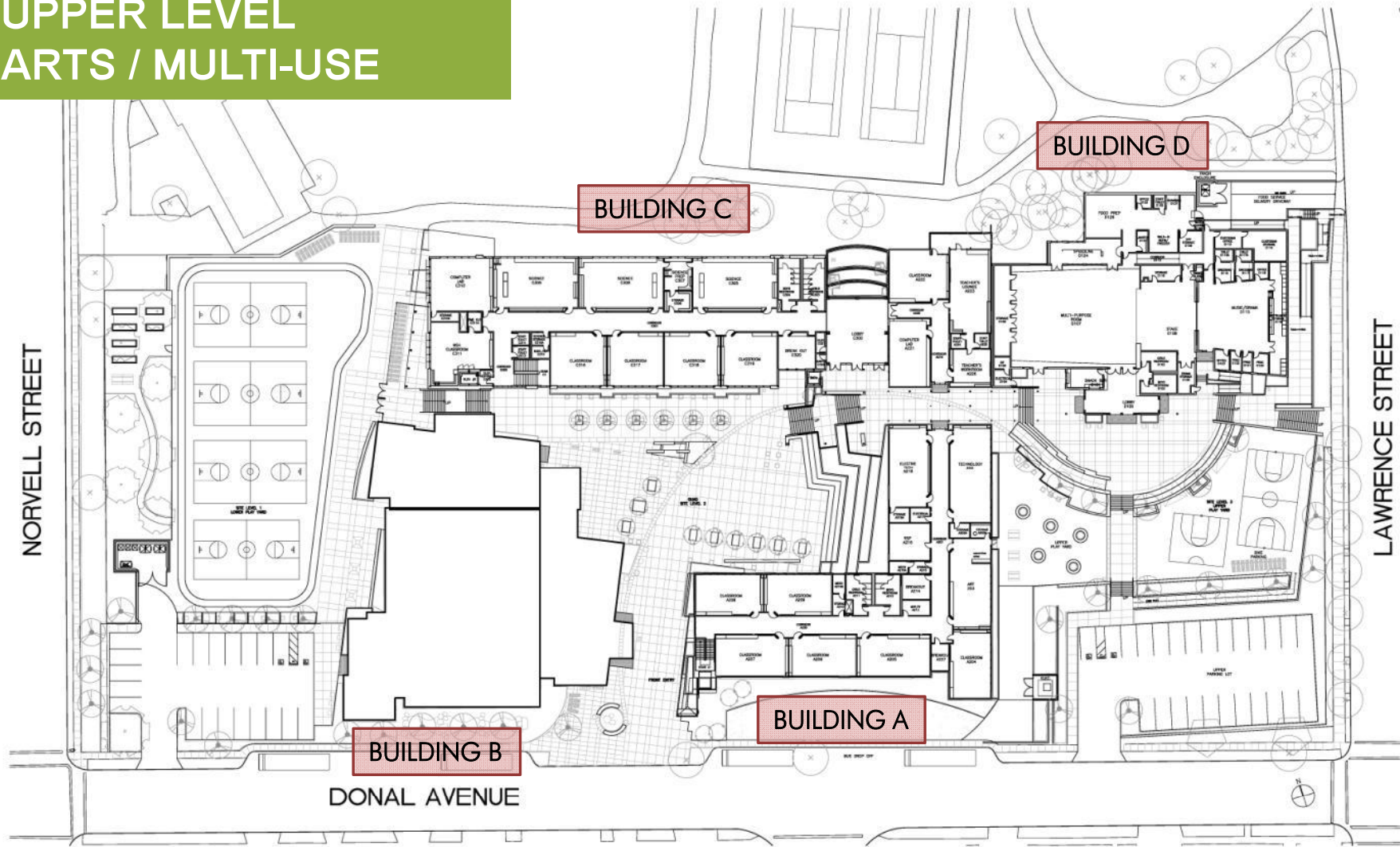


**PORTOLA MIDDLE / FAIRMONT ELEMENTARY SCHOOLS**  
WEST CONTRA COSTA UNIFIED SCHOOL DISTRICT  
PROJECT STATUS UPDATE  
MAY 31, 2014

HIBSER YAMAUCHI  
ARCHITECTS, INC.



# UPPER LEVEL ARTS / MULTI-USE



COMPOSITE SITE/FLOOR PLAN - SITE LEVEL 3

SCALE: 1" = 20'-0"



**PORTOLA MIDDLE / FAIRMONT ELEMENTARY SCHOOLS**  
WEST CONTRA COSTA UNIFIED SCHOOL DISTRICT  
PROJECT STATUS UPDATE  
MAY 31, 2014

HIBSER YAMAUCHI  
ARCHITECTS, INC.





# BUILDING A ORIGINAL CLASSROOM BUILDING



**PORTOLA MIDDLE / FAIRMONT ELEMENTARY SCHOOLS**  
WEST CONTRA COSTA UNIFIED SCHOOL DISTRICT  
PROJECT STATUS UPDATE  
MAY 31, 2014

HIBSER YAMAUCHI  
ARCHITECTS, INC.





# BUILDING B NEW GYM / ADMIN / LIBRARY



**PORTOLA MIDDLE / FAIRMONT ELEMENTARY SCHOOLS**  
WEST CONTRA COSTA UNIFIED SCHOOL DISTRICT  
PROJECT STATUS UPDATE  
MAY 31, 2014

HIBSER YAMAUCHI  
ARCHITECTS, INC. **HY**



# BUILDING C NEW CLASSROOM BUILDING



**PORTOLA MIDDLE / FAIRMONT ELEMENTARY SCHOOLS**  
WEST CONTRA COSTA UNIFIED SCHOOL DISTRICT  
PROJECT STATUS UPDATE  
MAY 31, 2014

HIBSER YAMAUCHI  
ARCHITECTS, INC. **HY**



# BUILDING D NEW MULTI-PURPOSE BUILDING



**PORTOLA MIDDLE / FAIRMONT ELEMENTARY SCHOOLS**  
WEST CONTRA COSTA UNIFIED SCHOOL DISTRICT  
PROJECT STATUS UPDATE  
MAY 31, 2014

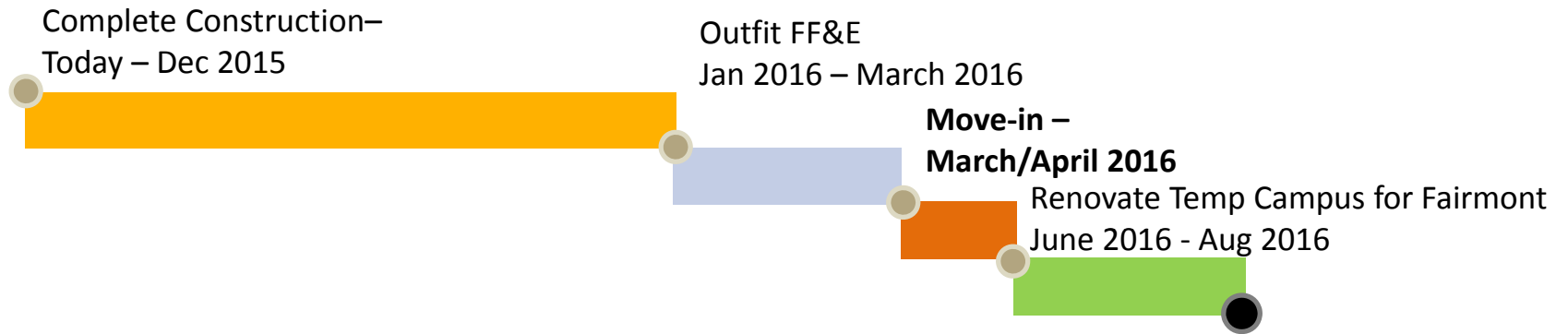
HIBSER YAMAUCHI  
ARCHITECTS, INC.



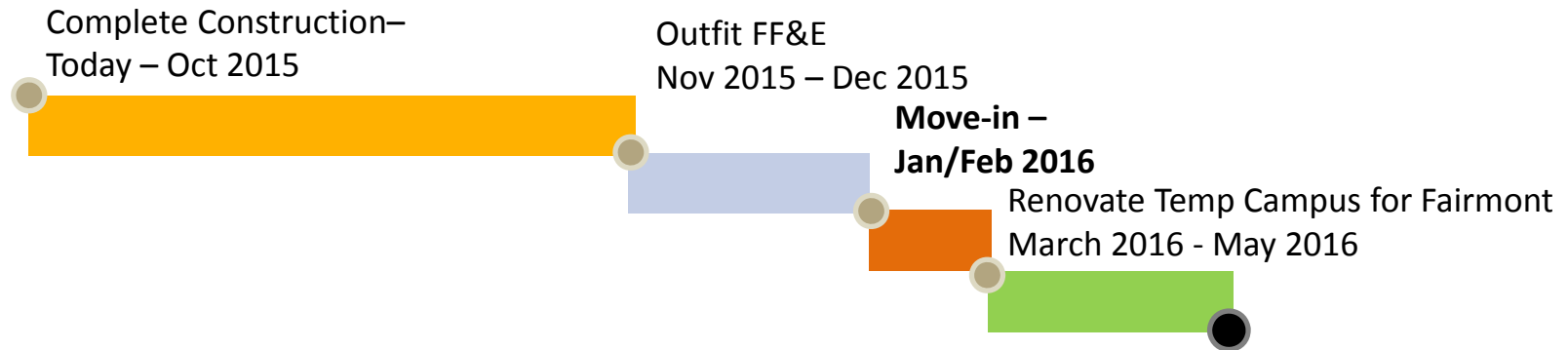


# SCHEDULE

## CURRENT CONTRACT



## POTENTIAL BEST CASE





# FAIRMONT ELEMENTARY SCHOOL

Leroy F. Green  
Design Awards  
Award of Merit



**PORTOLA MIDDLE / FAIRMONT ELEMENTARY SCHOOLS**  
WEST CONTRA COSTA UNIFIED SCHOOL DISTRICT  
PROJECT STATUS UPDATE  
MAY 31, 2014

HIBSER YAMAUCHI  
ARCHITECTS, INC.





# CURRENT CAMPUS

- 55 year old campus
- 2.95 acres
- 38,500 S.F. of Buildings
- 580 Pre-K through 6<sup>th</sup> grade enrollment in 2013-2014
- 24 classrooms
- Administration, Kindergarten classrooms, and Library are undersized.
- Special Education classrooms are inadequate.
- Staff parking used by Public Library and Senior Center





# PROGRAM NEEDS

- Increase in Enrollment up to 611 students
- 10% Special Ed. – appropriate spaces needed
- Increase in classrooms required
- Flexible Multi-Use spaces required
- Larger Multi-Purpose & Administration
- More kindergarten classrooms
- Maintain existing play area
- Improve Sp. Ed Bus Pick-Up / Drop-off
- Improve control of campus entry points



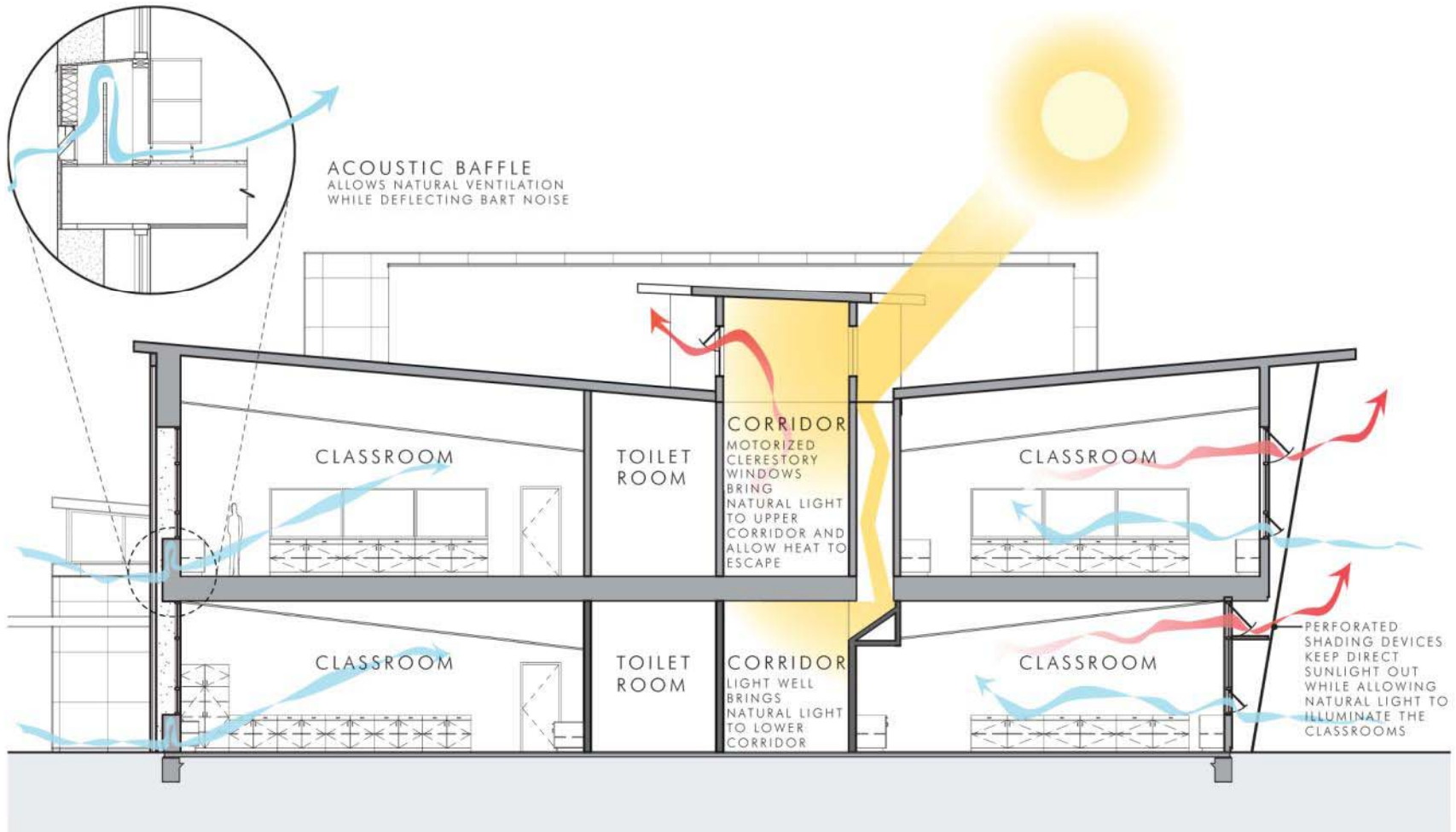
# CHALLENGES

- Small site
- Site orientation – classroom daylighting
- BART noise
- Pick-up and drop-off congestion
- Separating Public library and Senior Center from campus





# BUILDING SECTION



**PORTOLA MIDDLE / FAIRMONT ELEMENTARY SCHOOLS**  
WEST CONTRA COSTA UNIFIED SCHOOL DISTRICT  
PROJECT STATUS UPDATE  
MAY 31, 2014

HIBSER YAMAUCHI  
ARCHITECTS, INC. **HY**

# PROGRAM DRIVEN REPLACEMENT CAMPUS

- 3.23 acres
- 75,973 S.F.
- 611 Pre-K through 6<sup>th</sup> grade enrollment
- 34 classrooms
- Administration controls campus points of entry
- Sp. Ed. classrooms - size increased to 1,450 S.F. District Standard
- Two Multi-Purpose rooms for instructional Flexibility.
- Outdoor learning spaces

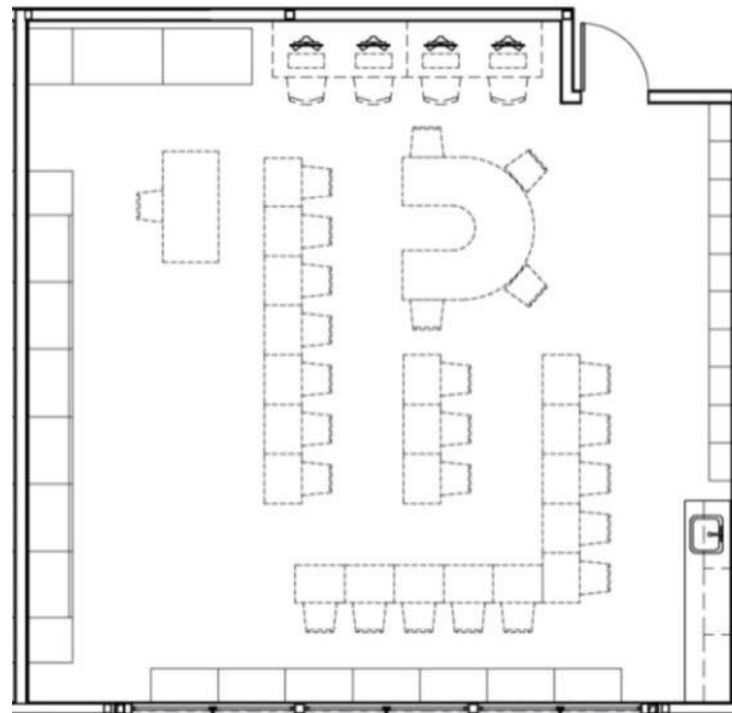




# CLASSROOM WING



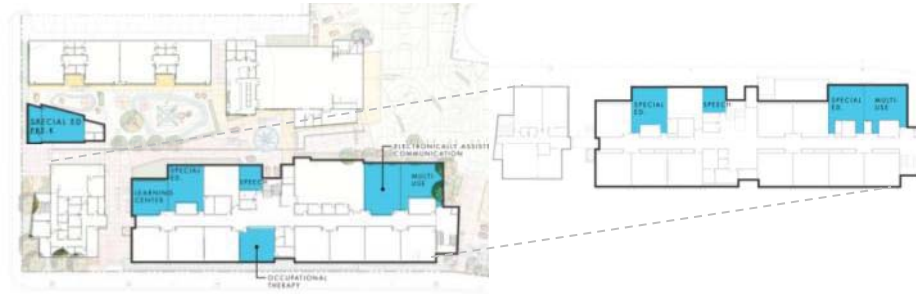
- 960 S.F. classrooms following District standards.
- 18 foot long teaching wall
- Ceiling mounted projector & pull down screen
- 4 computer stations
- Tall operable windows
- Classrooms meet CHPS criteria



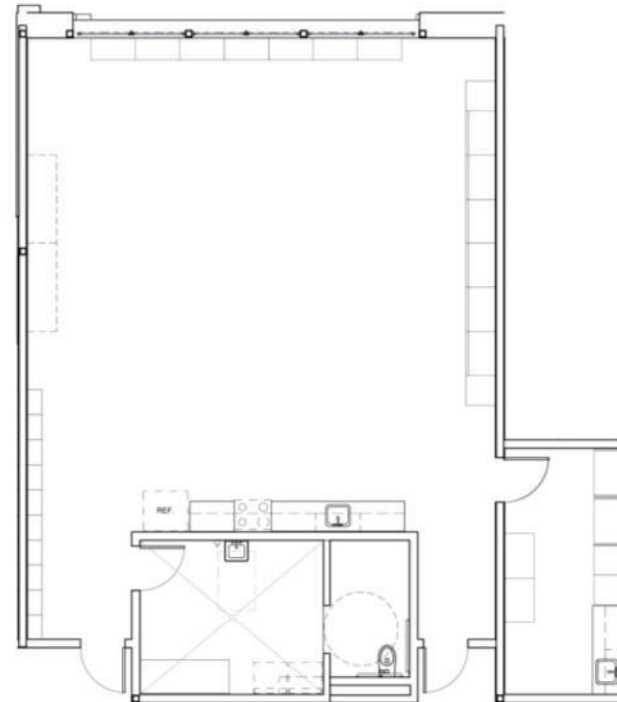
STANDARD CLASSROOM



# SPECIAL ED. CLASSROOMS



- Three 1,450 S.F. classrooms with changing room, showers, laundry, restroom, and office/storage area.
  - Pre-K, Primary and Secondary Severely Handicapped
  - Learning Center
  - Speech
  - Full Inclusion / ICHAT
  - Occupational Therapy

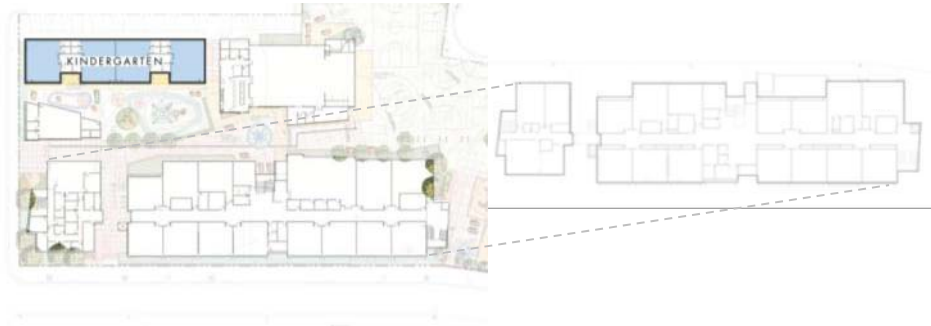


STANDARD SPECIAL ED CLASSROOM

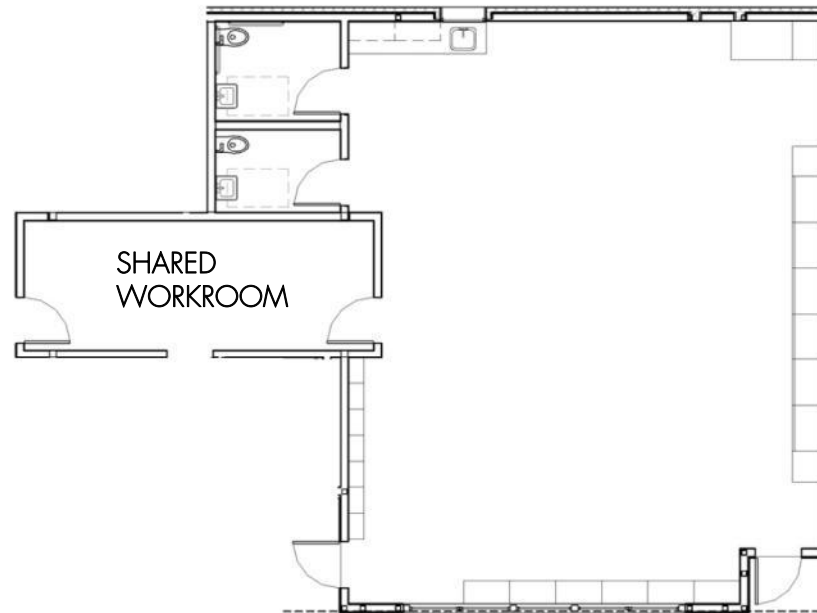




# KINDERGARTEN WING



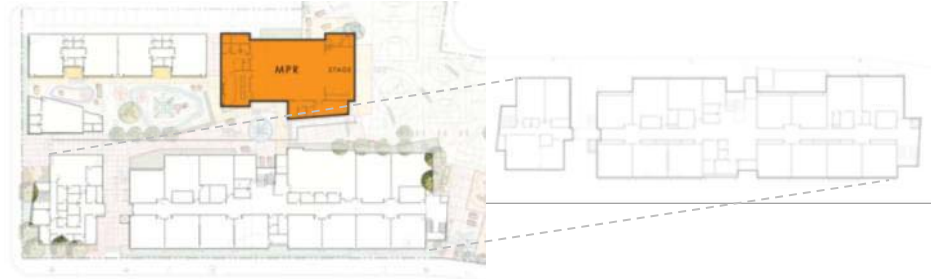
- 4 classrooms @ 1,450 S.F.; includes shared workspace, storage and student restrooms
- 18 foot long teaching wall
- High sloped ceilings for daylighting and ventilation.



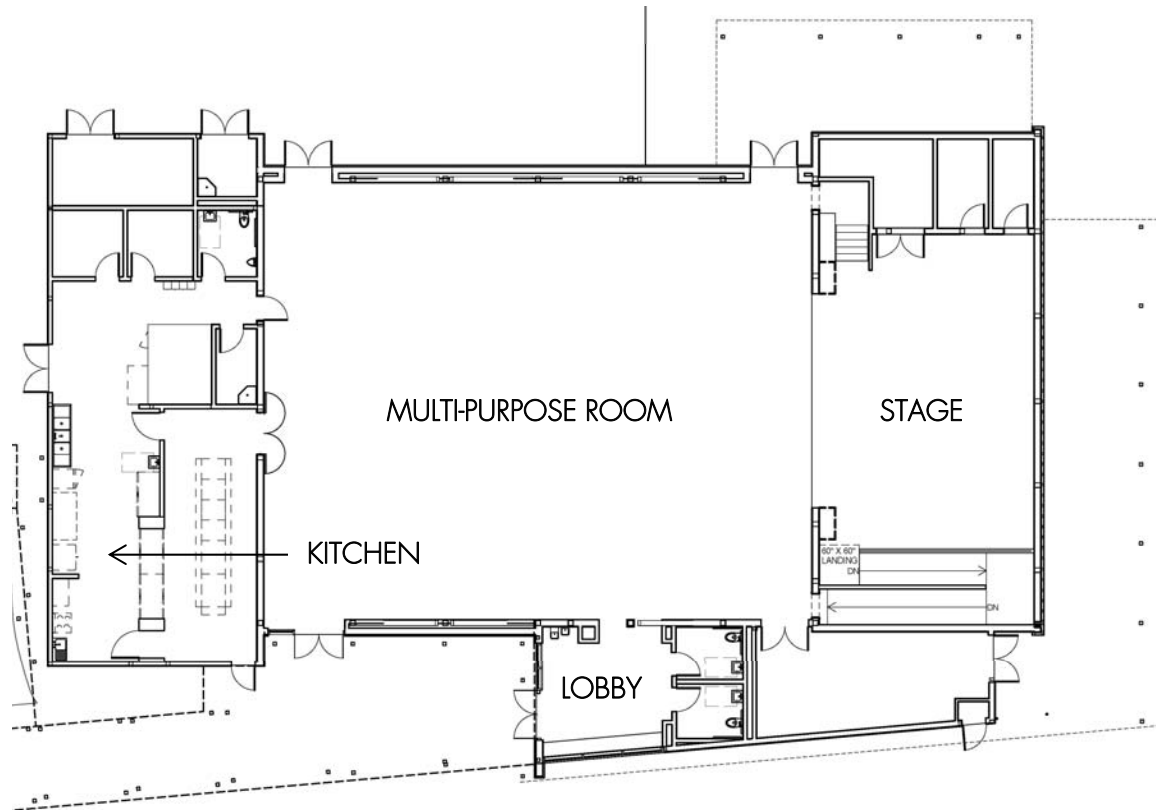
STANDARD KINDERGARTEN



# MULTI-PURPOSE BUILDING



- 8,513 S.F.
- Kitchen / Community kitchen
- Speedline
- Stage with access ramp
- Table / Chair Storage
- Lobby
- Outdoor Eating Area

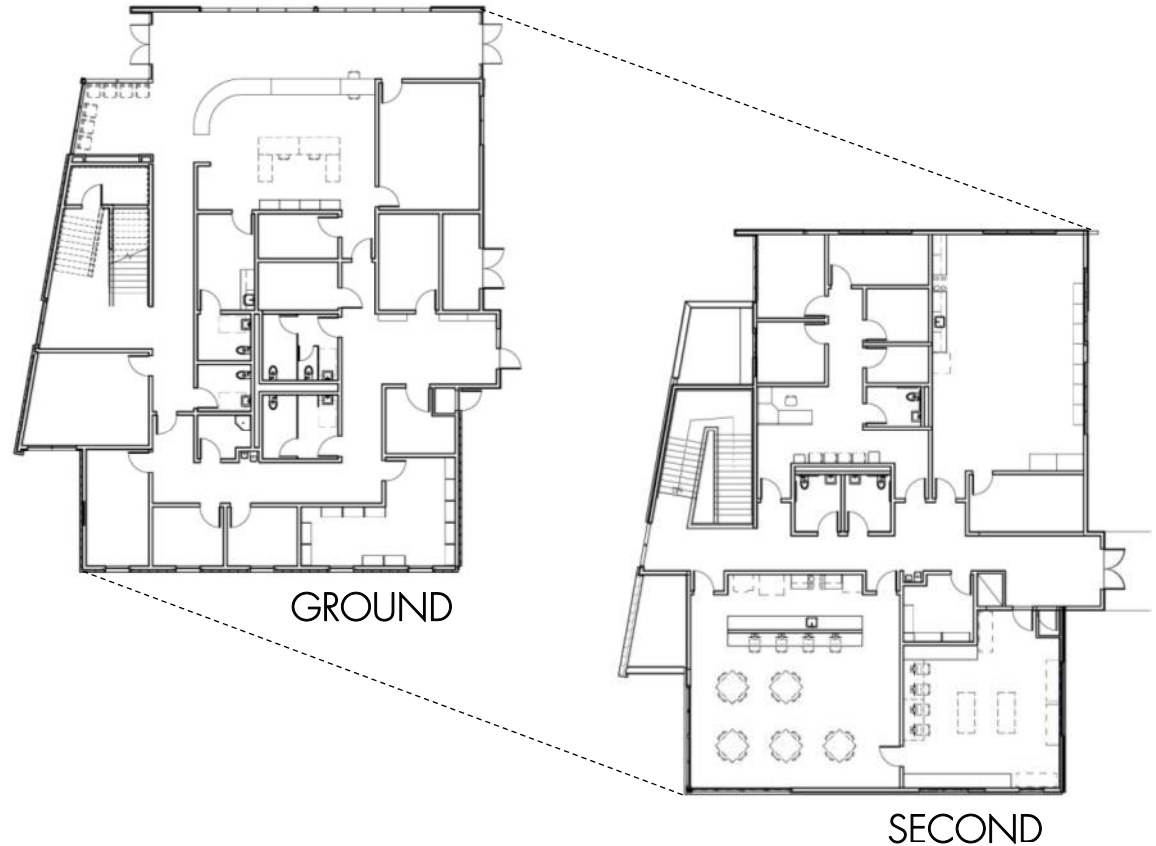




# ADMINISTRATION WING



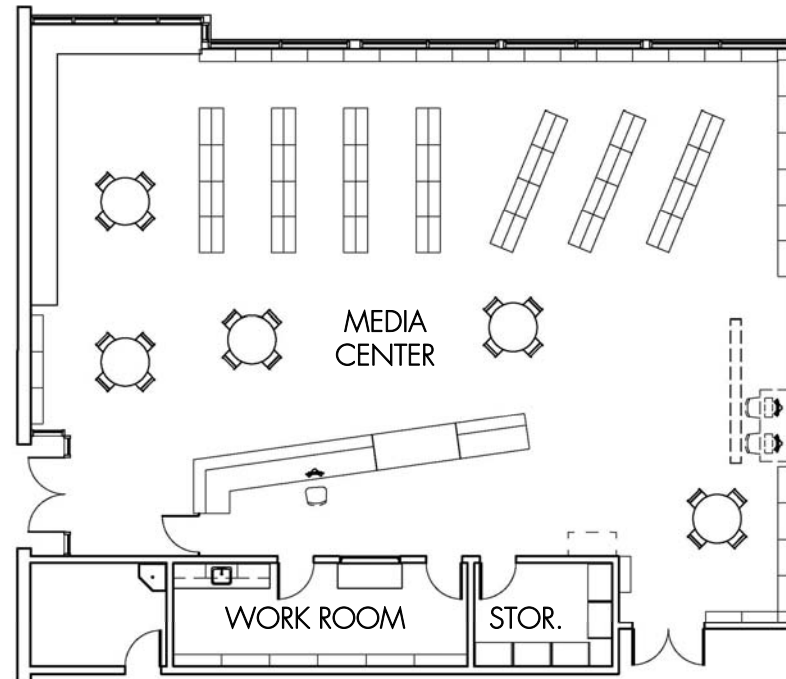
- Control of visitors entering campus.
- Administration on ground floor.
- Community Clinic, Parents' Workroom, and Staff Lounge on second floor.



# LIBRARY



- 2,800 S.F. state-of-the-art Library / media center
- Story area with built in seating
- Computer area easily supervised
- Ceiling mounted projection screen
- Centrally located
- Flexibility



LIBRARY





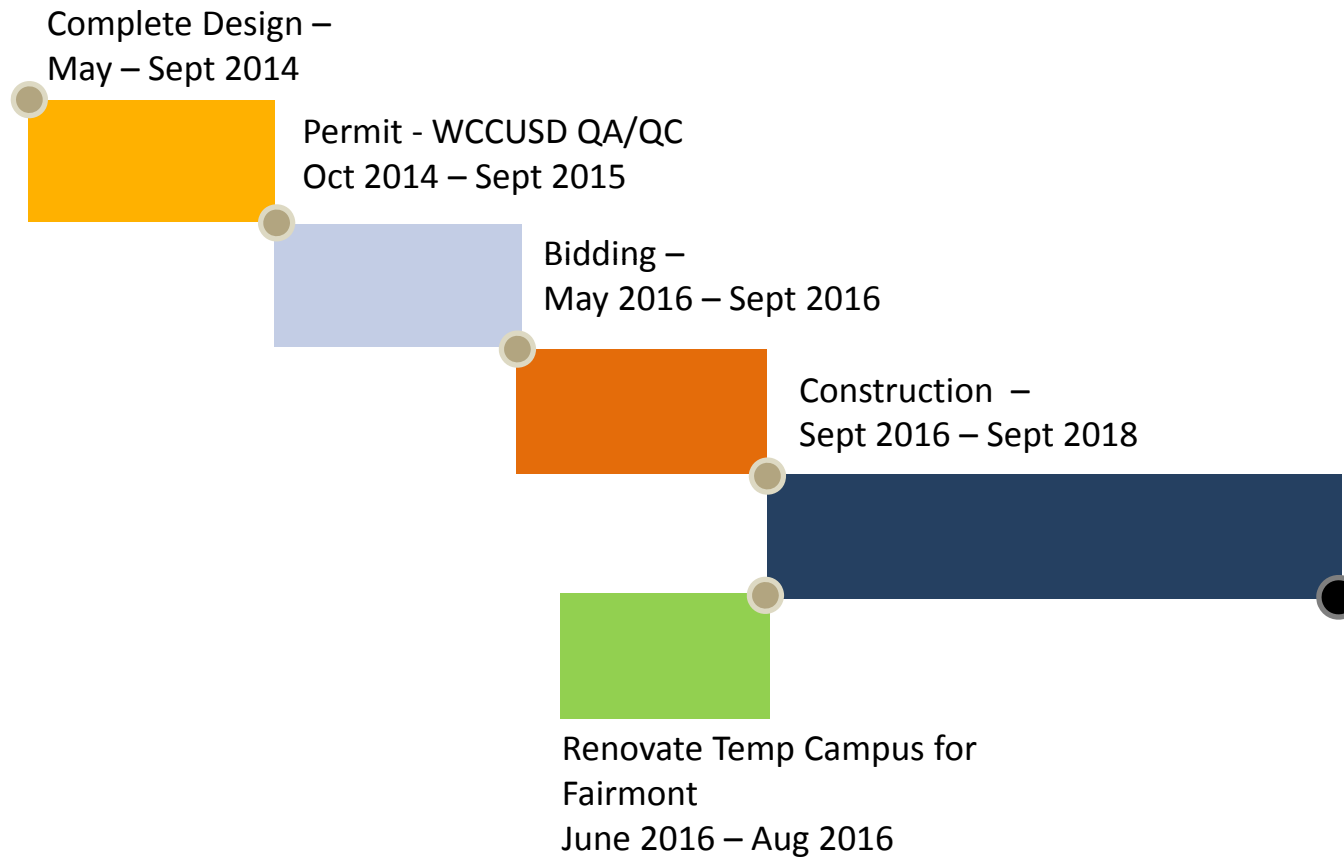
# SITE FEATURES



- Fully accessible site
- Tactile learning panels at all classroom entries
- Making use of outdoor spaces as learning areas
- Emphasis on local history & ecosystems
- Daylighting circulation – both floors Classroom wing
- Community Garden
- Design meets CHPS requirements



# SCHEDULE





Thank you!



**PORTOLA MIDDLE / FAIRMONT ELEMENTARY SCHOOLS**  
WEST CONTRA COSTA UNIFIED SCHOOL DISTRICT  
PROJECT STATUS UPDATE  
MAY 31, 2014

HIBSER YAMAUCHI  
ARCHITECTS, INC. **HY**